



NORTH BIHAR POWER DISTRIBUTION CO. LTD.

[Office of Chief Engineer, Project-I/Urban]
(Regd. Office: Vidyt Bhawan, Bailey Road, Patna)
CIN No: U40109BR2012SGC018920

Letter No: 1574

[File No:-N-XIII/RDSS/V.A/Samastipur Circle-3019/2023-

Dated: 27-10-23

E-mail: cerdssnbpdc@gmail.com

From,

Shriram Singh
Chief Engineer, Project-I (Urban)

To,

M/s Polycab India Ltd.
Polycab House, 771,
Pandit Satwalekar Marg, Mumba
Email:- umesh.joshi@polycab.com

Sub:- Regarding approval of GTP & Drawing of SMC Single & 3 Phase SMDB of make M/s Lan Engineering & Technologies, Noida for Loss Reduction Component works under "Revamped Reforms-Based and Results-Linked Distribution Sector Scheme."

Ref:- (i) NOA No.-248 & 249 dated 06.03.2023
(ii) Your letter no.-PIL/HO/22-23/NBPDCL/Misc/122 dated 05.10.2023
(iii) This office Letter No.-239 dated 10.10.2023

Sir,

With reference to the above, please find the copy of approved GTP & Drawing of following item for Loss Reduction Component works under "Revamped Reforms-Based and Results-Linked Distribution Sector Scheme":-

S.N.	Material Description	Vendor Name
1	SMC Single Phase LT Distribution Box (285 X 225 X 120 mm)	M/s Lan Engineering & Technologies, B-07 & B-17, Sector-83, Noida-201305, U.P.
2	SMC Three Phase LT Distribution Box (300 X 418 X 120 mm)	

Correction where required in GTP & Drawing submitted by you has been done. However, these drawings shall be subject to correctness as per technical specifications of the tender document and the entire responsibility of correctness of the drawing as per the specifications as well as supply of material according to the technical specifications of the contract agreement shall be that of the contractor.

In case of any conflict or contradiction between GTP/Drawing & Technical Specifications, the decision of Chief Engineer, Project-I (Urban) shall be final and binding on both parties. Contractor shall have to replace the material to the entire satisfaction of the purchaser in case the material is found unsuitable for use in the project, at any stage.

Please carry out the works immediately under the conditions stated above.

Encl:- As above

Yours faithfully,

(Shriram Singh)

Chief Engineer, Project-I (Urban)

Memo No.- 1574

Date- 27-10-23

Copy forwarded to Chief Engineer, Project-II, NBPDCL for information and necessary action.

Encl:-As above

(Shriram Singh)

Chief Engineer, Project-I (Urban)

45



POLYCAB	POLYCAB India Ltd. POLYCAB House, 771 Pandit Satawalekar Marg, Mahim West, Mumbai-400016
PROJECT	Development of Distribution Infrastructure at Samastipur Electric Supply Circle (Samastipur & Vaishali districts) of Bihar under the Revamped Reforms-based and Results-linked, Distribution Sector Scheme.
OWNER	North Bihar Power Distribution Company Limited Vidyut Bhawan, Bailey Road, Patna-21
NOA NO.	N-XIII/P-I(U)/Tender(RDSS)-3050/2022/248 Dated:06/03/2023 N-XIII/P-I(U)/Tender(RDSS)-3050/2022/249 Dated:06/03/2023
MANUFACTURER	M/s. Lan Engineering & Technologies, B-07&17, Sector-83, Noida

**GUARANTEED TECHNICAL PARTICULARS OF SMC SINGLE PHASE
LT DISTRIBUTION BOX FOR LT AB CABLE**

S. No.	PARTICULARS	DETAILED PARTICULARS	OFFERED
1.	Manufacturer's Name	M/s Lan Engineering & Technologies B-07&17, Sector-83, Noida-201305 (U.P.)	
2.	Material	Sheet Moulding Compound (SMC) as per IS: 13410-1992	Sheet Moulding Compound (SMC) as per IS: 13410-1992 ✓
3.	Grade of Material	SMC Confirming to IS: 13410-1992, Grade S3	SMC Confirming to IS: 13410-1992, Grade S3 ✓
4.	Color of the Box	Off White	Off White ✓
5.	Properties of Material of Construction of SMC Box		
(a)	Heat deflection temperature (Ref std. IS:13411)	150° C (Min.)	150° C (Min.) ✓
(b)	Exposure to flame (Ref. Std. IS: 4249)	Self-extinguishing	Self-extinguishing ✓
(c)	Melting Point (Ref. Std. IS: 13360)	Does not melt	Does not melt up to 400° C ✓
6.	Degree of Protection	IP- 55	IP- 55 ✓
7.	Inside Dimension of the Box		
(a)	Height	285 mm	285 mm ✓
(b)	Width	225 mm	225 mm ✓
(c)	Depth	120 mm	120 mm ✓
(d)	Thickness of the Box	2.0 mm overall	2.0 mm overall ✓
8.	Earthing Arrangement	M6x25 MSZP Bolt with nut and washer	M6x25 MSZP Bolt with nut and washer ✓
9.	Hinge	Concealed SS hinge provided	Concealed SS hinge provided ✓
10.	Door Closing Arrangement	"U" shaped Latch provided	"U" shaped Latch provided ✓
11.	Locking & Sealing Arrangement	Φ8mm hole for Locking & Φ2.5mm hole for wire sealing	Φ8mm hole for Locking & Φ2.5mm hole for wire sealing ✓
12.	Bus Bar Details		
(a)	Bus Bar Material	EC Grade Aluminium Bus Bar	EC Grade Aluminium Bus Bar ✓
(b)	Bus Bar size	40x6mm (165 mm Long-2 nos.)	40x6mm (165 mm Long-2 nos.) 17 X 24 85mm ✓
(c)	Nos. of Connection from each bus bar	1 nos. I/C & 8 nos. O/G Connection	1 nos. I/C & 8 nos. O/G Connection ✓

APPROVED
Subject to the condition that you are not absolved to the responsibility of correctness of materials

GE (Project-1), Urban
NBPDCI

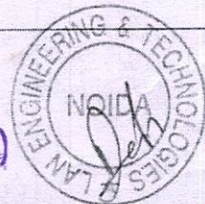
B-07 & B-17, Sector-83, Noida-201305, (U.P) INDIA
+91-9811520225

lantecnoida@gmail.com, Sale@lanengineering.in

Mfg Of : AB Cable Accessories, LT Cable, & Energy Meters, SMC, Deep Drawn, Polycarbonate LT Distribution Boxes & Meter Boxes.

Checked

MP ✓
SY ✓
AEE(P-1) ✓
EEE(P-1) ✓
ESE(P-1) ✓



13.	Connection Arrangement	M6x25mm MSZP nut Bolt & washer	M6x25mm MSZP nut Bolt & washer
14.	Bus Bar Mounting Arrangement	Step Mounting Arrangement	Step Mounting Arrangement
15.	Clearances between Bus Bar to Bus Bar	40 mm (Min.)	40 mm (Min.)
16.	Cable Entry & Exit Arrangement	1 no. Φ 30 mm hole with Rubber Grommet for incoming cable & 8 nos. Φ 15 mm hole with Rubber Grommet for outgoing cable on the lower wall of the box.	1 no. Φ 30 mm hole with Rubber Grommet for incoming cable & 8 nos. Φ 15 mm hole with Rubber Grommet for outgoing cable on the lower wall of the box.
17.	Box Mounting Arrangement	2 nos. 25x3mm MS Flat & 1 no. Φ 6 mm MS Clamp as per drawing	2 nos. 25x3mm MS Flat & 1 no. Φ 6 mm MS Clamp as per drawing
18.	Rating of Current	200 Amp	200 Amp
19.	Rating of Voltage	600V	600V
20.	Tamper Proof	Box Could not be Temper proof through hot soldering Iron	Box Could not be Temper proof through hot soldering Iron
21.	Marking	As per drawing	NBPDCL-RDSS, manufacturer Name and Danger marking in red colour.

Tolerance - $\pm 3\%$

NOTE - leftover parameters if any shall be as per TS of RDSS and relevant standards.

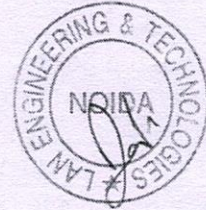
Checked

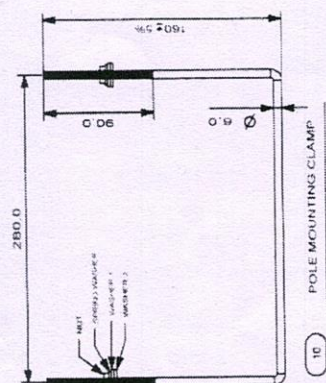
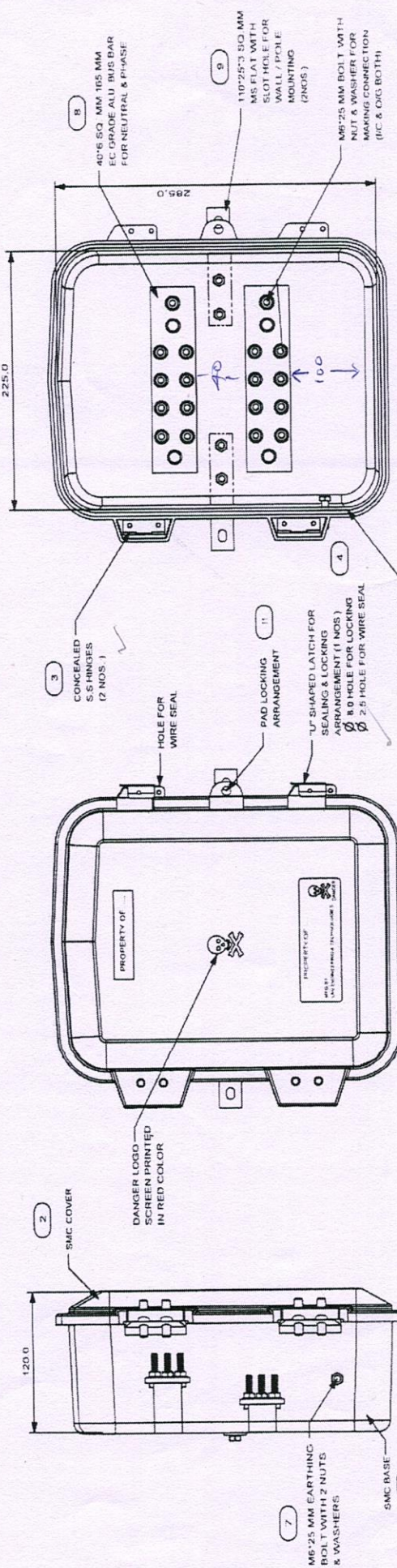
MP/SY
AEE(P-1) EEE(P-1) ESE(P-1)

APPROVED

Subject to the condition that you are not absolved to the responsibility of correctness of materials

CE (Project-1), Urban
NBPDCL





APPROVED
 Subject to the condition that you are not absolved to the responsibility of correctness of materials.
 (Project-1) Urban



Checked
 AEE(P-1) EEE(P-1) ESE(P-1)

POLYCAB India Ltd.	
PHONE	North Bihar Power Distribution Company Limited
OWNER	Varanasi Branch, Baidya Road Patna 21
NO. OF SHEETS	1
DATE OF PREPARATION	20/07/2014
DATE OF APPROVAL	20/07/2014
DATE OF REVISION	20/07/2014
REVISION	
LAN ENGINEERING & TECHNOLOGIES B-7 & B-17 SECTOR-83 NOIDA	
UP-201305	

S.NO	DESCRIPTION	QTY
1.	BASE SMC	1 NOS
2.	COVER SMC	1 NOS
3.	CONCEALED HINGES	2 NOS
4.	"U" SHAPED LATCH WITH SEAL HOLE	1 NOS
5.	CABLE HOLE WITH RUBBER GROMMET	1 NOS
6.	RUBBER GASKET	1 NOS
7.	WASHER	2 NOS
8.	ALU BUS BAR FOR PHASE & NEUTRAL	1 NOS
9.	MS FLAT MOUNTING CHANNEL	1 NOS
10.	WIRE POLE CLAMP	1 NOS
11.	PAD LOCKING ARRANGEMENT	1 NOS

- NOTE:**
- MADE OUT OF GLASS REINFORCED POLYESTER SHEET MOULDING COMPOUND BY THE PROCESS OF HOT PRESS COMPRESSION MOULDING CONFORMING IS 13410
 - SMC BASE OR COVER SHALL NOT SOFTEN OR BEND ON HEATING
 - DOOR PIETED TO BASE BY CONCEALED HINGES WITH DOOR CLOSING CLAMP
 - DIMENSIONS (INSIDE) L-285 W-225 H-120 MM
 - COLOR OFF WHITE
- ALL DIMENSIONS IN MM
 TOLERANCE IN SIZE: $\pm 0.3\%$

124



LAN
ENGINEERING & TECHNOLOGIES
An ISO 9001:2015 Certified Company

43

		POLYCAB India Ltd. POLYCAB House, 771 Pandit Satawalekar Marg, Mahim West, Mumbai-400016	
PROJECT	Development of Distribution Infrastructure at Samastipur Electric Supply Circle (Samastipur & Vaishali districts) of Bihar under the Revamped Reforms-based and Results-linked, Distribution Sector Scheme.		
OWNER	North Bihar Power Distribution Company Limited Vidyut Bhawan, Bailey Road, Patna-21		
NOA NO.	N-XIII/P-I(U)/Tender(RDSS)-3050/2022/248 Dated:06/03/2023 N-XIII/P-I(U)/Tender(RDSS)-3050/2022/249 Dated:06/03/2023		
MANUFACTURER	M/s. Lan Engineering & Technologies, B-07&17, Sector-83, Noida		
GUARANTEED TECHNICAL PARTICULARS OF SMC THREE PHASE LT DISTRIBUTION BOX FOR LT AB CABLE			
S. NO.	PARTICULARS	DETAILED PARTICULARS	OFFERED
1.	Manufacturer's Name	M/s Lan Engineering & Technologies B-07&17, Sector-83, Noida-201305 (U.P.)	
2.	Material	Sheet Moulding Compound (SMC) as per IS: 13410-1992	Sheet Moulding Compound (SMC) as per IS: 13410-1992 ✓
3.	Grade of Material	SMC Confirming to IS: 13410-1992, Grade S3	SMC Confirming to IS: 13410-1992, Grade S3 ✓
4.	Color of the Box	Off White	Off White ✓
5. Properties of Material of Construction of SMC Box			
(a)	Heat deflection temperature (Ref std.IS:13411)	150° C (Min.)	150° C (Min.) ✓
(b)	Exposure to flame (Ref. Std. IS: 4249)	Self-extinguishing	Self-extinguishing ✓
(c)	Melting Point (Ref. Std. IS: 13360)	Does not melt	Does not melt up to 400°C ✓
6.	Degree of Protection	IP- 55	IP- 55 ✓
7. Inside Dimension of the Box			
(a)	Height	300 mm	300 mm ✓
(b)	Width	418 mm	418 mm ✓
(c)	Depth	120 mm	120 mm ✓
(d)	Thickness of the Box	2.0 mm overall	2.0 mm overall ✓
8.	Earthing Arrangement	M6x25 MSZP Bolt with nut and washer	M6x25 MSZP Bolt with nut and washer ✓
9.	Hinge	Concealed SS hinge provided	Concealed SS hinge provided ✓
10.	Door Closing Arrangement	"U" shaped Latch provided	"U" shaped Latch provided ✓
11.	Locking & Sealing Arrangement	Φ8mm hole for Locking & Φ2.5mm hole for wire sealing	Φ8mm hole for Locking & Φ2.5mm hole for wire sealing with lock ✓
12. Bus Bar Details			
(a)	Bus Bar Material	EC Grade Aluminium Bus Bar	EC Grade Aluminium Bus Bar ✓
(b)	Bus Bar size	25 x 10 mm- (190mm Long)-3 Nos. for Phase 40 x 6 mm- (190mm Long)-1 Nos. for Neutral	25 x 10 mm- (190mm Long)-3 Nos. for Phase - 17x24 40 x 6 mm- (190mm Long)-1 Nos. for Neutral - 20x10 ✓

APPROVED
Subject to the condition that
you are not absolved to the
responsibility of correctness
of materials
GE (Project-1), Urban
NBPDCI

Checked

AEE(P-1) EEE(P-1) ESE(P-1)

B-07 & B-17, Sector-83, Noida-201305, (U.P) INDIA
+91-9811520225

lantehnoida@gmail.com, Sale@lanengineering.in

Mfg Of : AB Cable Accessories, LT Cable, & Energy Meters, SMC, Deep Drawn,
Polycarbonate LT Distribution Boxes & Meter Boxes.





LAN

ENGINEERING & TECHNOLOGIES
An ISO 9001:2015 Certified Company

(c)	Nos. of Connection from each bus bar	1 no. I/C & 4 nos. O/G suitable for 4C x 16 sq mm	1 no. I/C & 4 nos. O/G suitable for 4C x 16 sq mm
13.	Connection Arrangement	M8x30mm MSZP Bolt with Nut & Washer	M8x30mm MSZP Bolt with Nut & Washer ✓
14.	Bus Bar Mounting Arrangement	Stepped Mounting Arrangement	Stepped Mounting Arrangement ✓
15.	Clearances between Bus Bar to Bus Bar	40 mm	40 mm ✓
16.	Cable Entry & Exit Arrangement	4 nos. Φ20 mm hole with Rubber Grommet & 4 nos. Φ20 mm hole with Rubber Grommet for incoming/ outgoing cable on the lower wall of the box	4 nos. Φ20 mm hole with Rubber Grommet & 4 nos. Φ20 mm hole with Rubber Grommet for incoming/ outgoing cable on the lower wall of the box. ✓
17.	Box Mounting Arrangement	4 nos. 25x3mm MS Flat & 2 nos. Φ6 mm MS Clamp as per drawing	4 nos. 25x3 mm MS Flat & 2 nos. Φ6 mm MS Clamp as per drawing ✓
18.	Current Rating	200A	200Amp ✓
19.	Voltage Rating	600V	600Volt ✓
20.	Temper Proof of box	Box could not be Tempered through hot soldering Iron	Box could not be Tempered through hot soldering Iron ✓
21.	Tolerance	+5%	+5% ± 3% ✓
21.	Marking	As per drawing	NBPDCL-RDSS, manufacturer Name, and Danger marking in red colour. ✓

NOTE - leftover parameters if any shall be as per TS of RD&E and relevant standards.



APPROVED

Subject to the condition that you are not absolved to the responsibility of correctness of materials

CE (Project-1), Urban
NBPDCL

Checked

MP / SY
AEE(P-1) EEE(P-1) ESE(P-1)

B-07 & B-17, Sector-83, Noida-201305, (U.P) INDIA
+91-9811520225

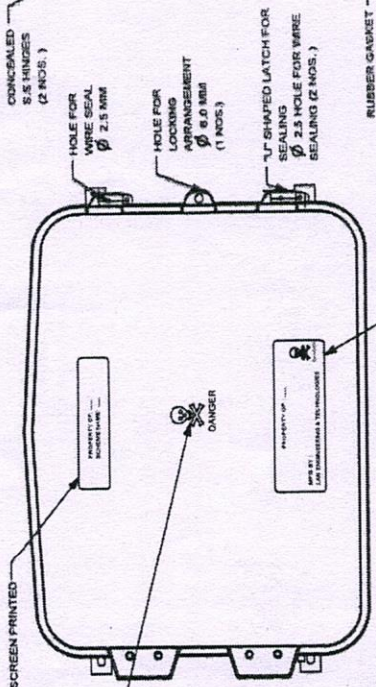
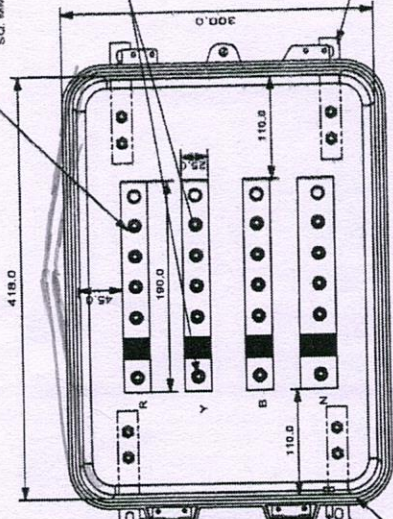
lantechnoida@gmail.com, Sale@lanengineering.in

Mfg Of : AB Cable Accessories, LT Cable, & Energy Meters, SMC, Deep Drawn, Polycarbonate LT Distribution Boxes & Meter Boxes.

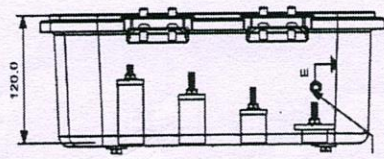
25*10 SQ. MM 150 (MML) EC GRADE ALU. BUSBAR FOR R.Y.B PHASE & 40X8 SQ. MM NEUTRAL (4 NOS.)

M8X30 MM BOLT WITH NUT & WASHER FOR MAKING CONNECTION (IC & OIG BOTH)

110X25X3 SQ MM M.S FLAT WITH SLOT HOLE FOR WALL / POLE MOUNTING (4 NOS.)

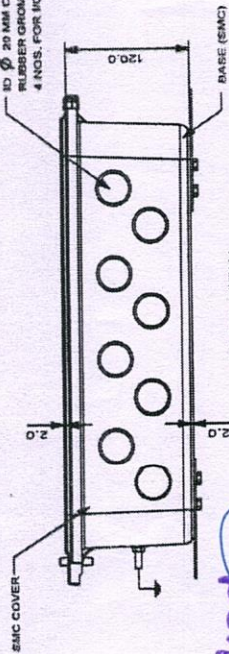


TOP VIEW

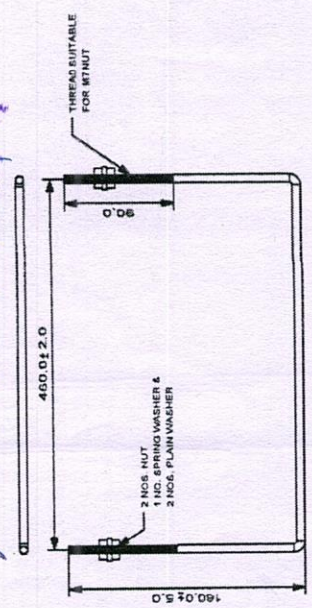


SIDE VIEW

M6X25 MM EARTHING BOLT WITH 2 NUTS & WASHERS



PLAN VIEW



M.S.GALV.D.ROLE-CLAMETZ (NOS.2500)

DOOR OPEN VIEW

APPROVED subject to the condition that the responsibility of correctness of materials are not absolved to the CE (Project-1), Urban NBPDC



Checked
AEE(P-1) EEE(P-1) ESE(P-1)

- NOTE:
1. MADE OUT OF SHEET MOLDING COMPOUND BY THE PROCESS OF HOT PRESS COPRESSION MOLDING CONFORMING TO IS:13410: GRADE B3
 2. SMC BASE OR COVER SHALL NOT SOFTEN OR BEND ON HEATING
 3. DOOR FITTED TO BASE BY CONCEALED HINGES & DOOR CLOSING CLAMP
 4. DIMENSIONS: H- 300MM, W-418MM, D-120MM
 5. THICKNESS OVERALL BOX INCLUDING COVER- 2.0MM
 6. COLOUR : OFF WHITE.
 7. GENERAL TOLERANCE ± 5%



POLYCAB	POLYCAB India Ltd.
PROJECT	Project Name: 771 South Kanpur, New Metro Technology 200014
OWNER	Development of distribution infrastructure at Kanpur Electric Supply Circle (Kanpur & Varanasi district) of Bihar under the Prarampar Scheme based and Recharge: Feed, Distribution Sector Scheme
NO. OF NOS.	North Bihar Power Distribution Company Limited Vidya Bhawan, Bailey Road, Patna 21
MANUFACTURER	N.XEHP.AU) Tenders(RUSS) 3059202248 Dated:06/03/2024 XHP-AU) Tenders(RUSS) 3059202248 Dated:06/03/2023 LAN ENGINEERING & TECHNOLOGIES, 76/17 SECTOR, G.P.O. NO. 20195

TITLE		LAN ENGINEERING & TECHNOLOGIES B-07 & 17, SECTOR-83, NOIDA UP-201305	
FIRST ISSUED	DRAWN BY	CHECKED BY	APPROVED BY
SCALE 1:1		SHEET 1 OF 1	

ALL DIMENSIONS IN MM
TOLERANCE IN SIZE/ THICKNESS ± 5%